

# Download and Installation Instructions

## AaaTeX's IIF Importer

(ReadMe.pdf)  
(Build 3.1.xxx)

### By AaaTeX Corp.

See Operations.pdf for instructions on operating the program

The program will run as a separate windows application that you start as a normal windows program (i.e. from the Start/Programs menu or an shortcut on the desktop). It does require that QuickBooks is up with an authorized user logged on.

#### The installation process is composed of 2 -3 packages.

1. Intuit's QBFC interface code (REQUIRED)
2. Our program Package (REQUIRED).
3. For QB Online Edition users only – QBOEConnector code.

1. (REQUIRED) The qbFC interface that you can get from our site (see below) or a download will be invoked upon first access to QuickBooks. Note this may already be on your system if you have other 3rd party QuickBooks Products. You may also download the qbFC installer from our site at:

[http://www.aaatex.com/downloads/QBFC7\\_0Installer.exe](http://www.aaatex.com/downloads/QBFC7_0Installer.exe)

qbFC is Intuit's interface code. Just execute it and follow any prompts. This program is needed to run any programs with the qbFC/XML interface and must be installed before running our programs.

2. (REQUIRED) **Our program package** can be downloaded from our site by clicking on the following <http://www.AaaTeX.com/downloads/IIFImporterPackage.exe>.

It is a self-extracting zip program to do a normal MS Visual Basic install. Please follow the prompts taking all the defaults.

The install will create our folder c:\Program Files bbb\AaaTeX\IIFImporter where bbb = (X86) for 64 bit operating systems (i.e. XP 64, Vista 64, etc.).

You can start our program via Start/Programs/AaaTeX/IIFImporter. You can also copy it to your desktop if you wish (right click and drag to desktop, select create shortcut here).

You can just execute the attached or downloaded file and take the default on all prompts.

This may require installing as the Windows Administrator or 'Run As Administrator'.

It is a normal MS VB install and will create a folder (program folder).

**C:\Program Files bbb\AaaTeX\IIFImporter**

where bbb is (x86) for 64 Bit versions of Windows (i.e. XP 64, Vista 64, etc.)

Program exe's kept in this folder and program install files

After the program is started the files are moved the running folder.

The *All Users Shared Folder* is used for all other files (new with Build 3.1)

The folder varies with Windows Version

**For XP., 2003 it is C:\Document And Settings\All Users\Shared Documents\AaaTeX\IIFImporter**

**For Vista Based systems it is c:\Public\Shared Documents\AaaTeX\IIFImporter**

**3. For QBOE Users ONLY– Intuit's Online Edition Connector (QBOEConnectorInstaller.exe)**

You can download it from

<http://www.AaaTeX.com/downloads/QBOEConnectorInstaller.exe>

or the program will request and download it when started.

**(Please note that you must also have used QBOE on the PC you are installing on for QBOE to add the required ActiveX supporting programs.)**

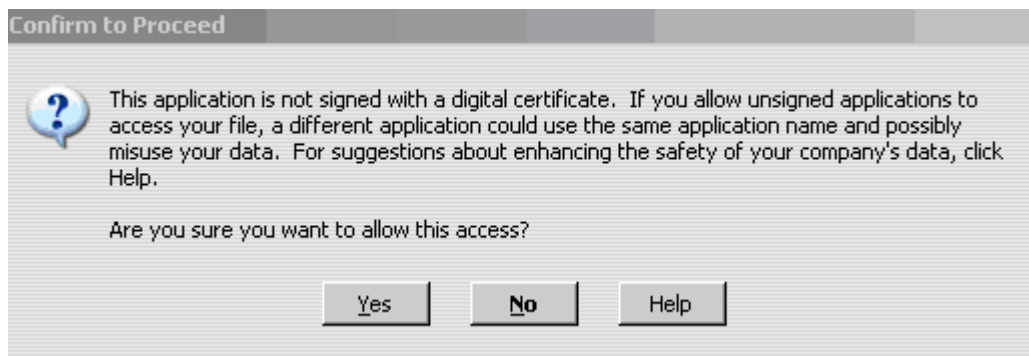
When running for the first time the QuickBooks **ADMIN** user must grant access via the QuickBooks Integrated Program Security messages that will popup. You must grant authority with the ADMIN user. This may vary slightly by version.

### Starting in 2005

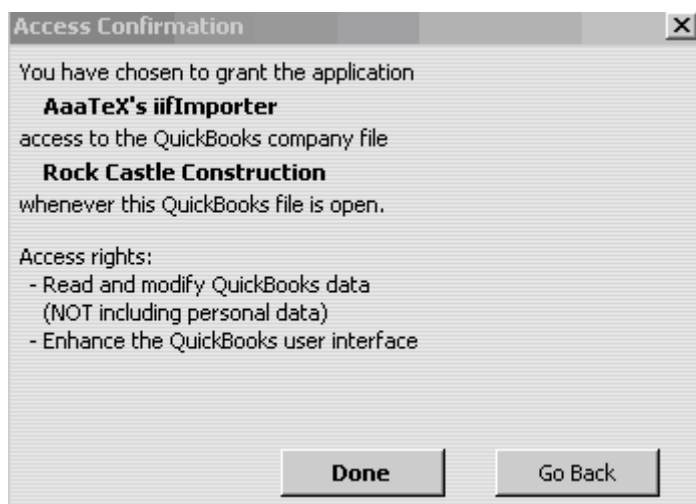
Click on 'Yes, whenever this QuickBooks company file is open



Click on **Yes**



Click on **Done**



**Prior to 2005**

When running for the first time the QuickBooks Integrated Program Security messages will popup. You must grant authority. This may vary slightly by QuickBooks version.

**Prompt 1 - Application with No Certificate**

Reply **YES, ALWAYS** or **YES, whenever this QuickBooks file is open**

**Confirm To Proceed.**

Reply **YES**

## Vista, 2008, Windows 7 Users:

These is not fully compatible with previous Windows XP, 2003 systems. There are several things that you should be aware of:

1. You may get a message ‘Could Not Start QuickBooks if there of these is true.
  - a. Vista User Access Control must be ON.
  - b. You cannot be logged onto Windows as Administrator.

**In case of any any problems there are 2 log files in the program folder that we would need.**

IIFImporterDeb.log (in the Shared Documents for XP/2003 or Public Documents folder for Vista, 2008, Windows 7.

C:\Users\Public\Public Documents\AaaTeX\IIFImporter)  
(or in c:\ProgramData\AaaTeX\IIFImporter for Vista users)

and

IIFImporterErr.log \*or IIFImporterYoufileNameErr.log which can be in either the Program’s Folder (if Put In Program Folder was checked) or your input folder

And

IIFImporter.ini (note that the .ini may not appear if you have not uncheck the ‘Hide File Extensions for know file types’ in the Folder Options / View). The file will show as ‘configuration settings’ on the right.

Also included the file you were importing.

Send any problems with the above files to [mailto:support@AaaTeX.com?subject=IIFImporter problem](mailto:support@AaaTeX.com?subject=IIFImporter%20problem)

## **Input Format: (See the Operations.pdf file for instructions on running the program).**

This program uses the same format as the QuickBooks IIF Format. It is expecting a normal Windows (each row/line ending with a CR/LF with no imbedded CR or LFs) tab delimited text file. Numeric fields are expected to be numeric and amount fields are expected to no more than 2 decimal places.

Custom Fields are supported as the Customer IIF(i.e. CUSTFLD01,...) but with the CUSTNAMEDICT preceding the data using it to tell the program which custom field is CUSTFLD01, etc.

See the AaaTeXEnhancements.iif and IIFImporter Operational Instructions for more information.